



N E W G E N E R A T I O N

B C X I I *series*

1 8 1 B C X I I

3 0 2 B C X I I

4 4 3 B C X I I



Ultimate high performance

 **Solahart**
BLACK CHROME XII

THE SOLAHART BCXII SERIES

... on top of the world

NEW GENERATION
BCXII series

1 8 1 B C X I I

3 0 2 B C X I I

4 4 3 B C X I I

Millions of dollars in research and over a decade of scientific development has culminated in the new generation Black Chrome XII (BCXII).

A solar hot water system so advanced, so reliable, it is backed by an exclusive 12 YEAR GUARANTEE. A guarantee which covers everything, all parts, right down to the last nut and bolt - including labour - for 12 years!

No other hot water system, gas, electric or solar, has ever had the confidence of its manufacturer to support a 12 year guarantee. It's an industry first, from Solahart. So, what does this mean to you?

Unprecedented reliability and lasting hot water without the worry and inconvenience of breakdowns associated with traditional systems.

Zero Maintenance.

All hot water systems need maintenance. Conventional systems require regular servicing, while standard solar hot water systems usually require a five year service.

Not so with Solahart's Black Chrome XII series. It's designed to take on the toughest conditions and it's maintenance free! In the unlikely event that any service is required, this will be carried out free of charge during its 12 year guarantee period.

Increased Performance.

When Solahart first launched its Black Chrome technology over a decade ago, it was years ahead of its time. However, we've taken something that was technologically far superior and made it even better.



24 HOURS A DAY
365 DAYS A YEAR

Fully sealed, solar collector panel.

Solahart's advanced OYSTER™ technology creates a unique controlled environment to trap and maximise the absorption of solar energy.

The OYSTER™ design features a fully pressed aluminium tray and high performance solar glass, bonded by means of a sophisticated clip and seal system which ensures that the panel is completely sealed from the elements. Moisture is totally excluded and the design also prevents damaging build up of ice and snow making it a superior solar collector panel for installation in the harshest atmospheric conditions.

Revolutionary Multi-Flow.

No other solar hot water system attracts and uses the sun's energy as effectively as Solahart's Black Chrome XII. The tough, unique black chrome plating combines with Solahart's exclusive Multiflow solar absorber panel to heat water faster and more efficiently.

So how does it work?

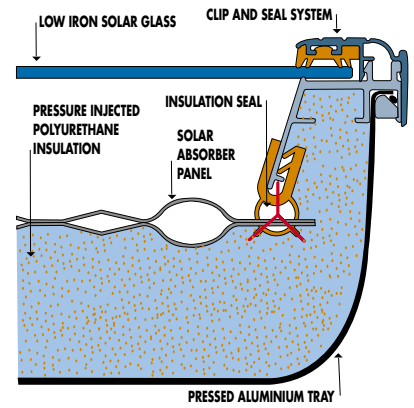
In standard solar hot water systems, water is circulated through the solar collector panels and back into the storage cylinder. But the Black Chrome XII is a closed circuit heat exchange system. A special heat transfer fluid absorbs the sun's energy and transfers heat to the water in the storage cylinder as it circulates within a special jacket surrounding the cylinder. With this system there is nothing to clog or corrode the inside of the solar collector panels. Plus the heat transfer fluid will not freeze, protecting your Solahart from damage, even under frost or prolonged sub-zero conditions.

You'll Recoup Your Investment.

True! The savings you'll make on your power bills, from the sun's free energy, means that you can recover the cost of your initial investment. So, your Solahart not only pays for itself, but it provides you with genuine savings year after year. Guaranteed. You won't get that with an ordinary gas or electric system.

The Black Chrome XII Is Automatic.

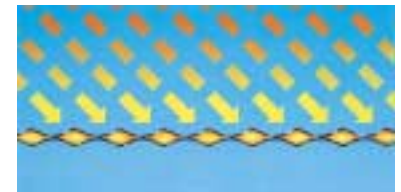
The Black Chrome XII comes with an automatic electric booster as standard. Although you do have the option of choosing a 'Natural Wonder' gas boosted system. (For gas booster, see separate product brochure and warranty).



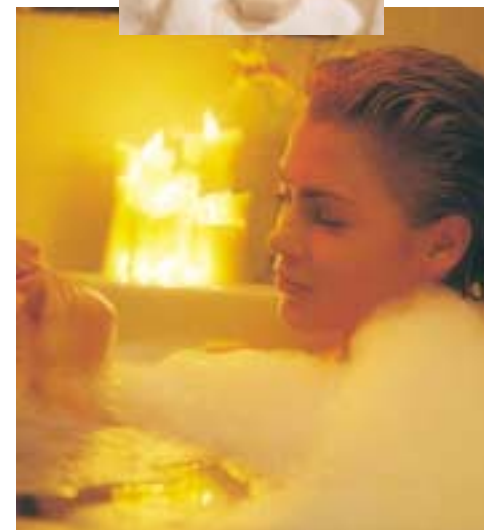
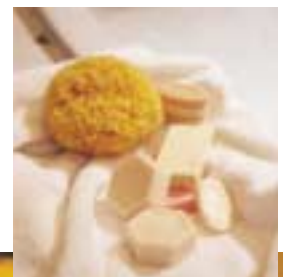
Cross Section of Oyster Collector



Standard fin and tube style absorber panel.



Solahart's Multi-Flow absorber featured in the Black Chrome XII.



You can choose a Black Chrome XII system which includes a 180, 220, 300 or 440 litre capacity. Although the sizes vary, the unique Black Chrome XII benefits are for everyone to enjoy.



How Do You Use Your Booster?

Many people ask about how they should use their booster switch. Our advice is to leave it switched on during winter or continuous cloudy periods.

Its fully automatic thermostat turns the booster on and off as needed to maintain pre-set temperature. It doesn't mean you're paying for supplementary electric or gas energy, just because your switch is on.

Environmentally Friendly.

Your new Black Chrome XII will not only save you money, but you'll be playing your part in reducing greenhouse gas emissions into the atmosphere (up to 5 tonnes per annum). Wouldn't it be great if everyone had a Solahart? The world would be a cleaner place.

Installed Same Day.

Your new generation Black Chrome XII can be installed within 24 hours.

In most cases, you won't have to go a day without a shower. Best of all, from the moment it's installed you're saving money with free energy from the sun.



302BCXII

1. STYLISH SLIM LINE DESIGN

The look made famous by Solahart. Seen on homes in over 70 countries around the world.

2. HOT WATER 24 HOURS A DAY, 365 DAYS A YEAR.

On those days when there's insufficient solar energy, your automatic booster (left switched on) cuts in to maintain hot water temperature for loads of hot water around the clock.

3. WORLD'S MOST ADVANCED TECHNOLOGY.

Your Black Chrome XII features a revolutionary sealed jacket around the storage cylinder. This enables the 'closed circuit' fluid to flow from the solar collector panels around the outside of the storage cylinder and quickly transfers its heat to the water stored in the cylinder. Simply put, it means plentiful hot water, supplied free from the sun, is ready and waiting for constant use.

4. HIGH DENSITY INSULATION.

Pressure injected CFC free, unique blue polyurethane foam is dimensionally stable at up to 200°C while ensuring minimum heat loss and robust performance. Rigid construction of the collector is possible due to the high density and high adhesion of the polyurethane foam. The result: your water stays hotter longer.

5. SUPERIOR PROTECTION.

The large capacity water storage cylinder is protected from the harshest water with not one, but two coats of ceramic lining, the top coat of which is Primaglaze®. Plus there's now a long life heavy duty sacrificial anode.

6. CORROSION PROTECTION.

Solahart's exclusive closed circuit system also eliminates risk of the collector plate corroding or clogging from the inside.

7. EXCLUSIVE MULTI-FLOW SOLAR ABSORBER.

Together with unique black chrome plating, greatly increases heat transmission to transfer fluid.

8. OYSTER™ TECHNOLOGY.

Fully sealed solar collector panel for installation in the harshest atmospheric conditions.

9. FREEZE PROTECTION.

Solahart's exclusive closed circuit design and Oyster technology is all the protection you need to prevent freezing in cold climate regions.

10. SOLAR GLASS.

Superior quality solar glass is tougher, providing superior performance, protection and appearance.

11. PROVEN HIGH PERFORMANCE.

Maximum absorption of solar energy is achieved by the unique, super responsive solar collectors which are designed to absorb more solar radiation and transfer it more efficiently.

12. MAINTENANCE FREE.

The system is designed to provide long, maintenance free service in harsh climate and water conditions.



Compare these features with other systems

	SOLAHART 12 YEAR PARTS	SOLAHART 12 YEAR LABOUR	OTHER SYSTEMS PARTS LABOUR	
TANK	✓	✓		
COLLECTORS	✓	✓		
VALVES	✓	✓		
THERMOSTAT	✓	✓		
GLASS	✓	✓		

TECHNICAL SPECIFICATIONS

Systems	1	2	3	3	4	
	8	2	0	0	4	
	1	1	2	3	3	
	BCXII	BCXII	BCXII	BCXII	BCXII	
Delivery (solar)	160	200	285	285	400	L
	43	53	76	76	107	USg
Delivery (aux)	135	175	230	230	320	L
	36	47	61	61	85	USg
Weight (full)	286	340	476	517	683	kg
	629	748	1047	1137	1503	lbs
Weight (empty)	105	119	174	214	240	kg
	231	262	383	471	528	lbs
Length	2.450	2.450	2.450	2.450	2.450	m
	96.5	96.5	96.5	96.5	96.5	ins
Height	0.51	0.51	0.51	0.51	0.51	m
	20.1	20.1	20.1	20.1	20.1	ins
Width	1.485	1.760	2.310	3.160	3.285	m
	58.5	69.3	90.9	124.4	129.3	ins
Working Pressure	1000	1000	1000	1000	1000	kPa
	145	145	145	145	145	psi
Test Pressure	2100	2100	2100	2100	2100	kPa
	304	304	304	304	304	psi
Tank type	180K	220K	300K	300K	440K	
Collector type	K ₀	K ₀	K ₀	K ₀	K ₀	
No of collectors	1	1	2	3	3	

Tanks	1	2	3	4	
	8	2	0	4	
	0	0	0	0	
	K	K	K	K	
Capacity	180	220	300	440	L
	48	59	80	117	USg
Weight (full)	251	299	393	555	kg
	552	658	865	1221	lbs
Weight (empty)	71	79	93	115	kg
	156	174	205	253	lbs
Length	1.494	1.760	2.310	3.285	m
	58.8	69.3	90.9	129.3	ins
Height	0.51	0.51	0.51	0.51	m
	20.1	20.1	20.1	20.1	ins
Width	0.51	0.51	0.51	0.51	m
	20.1	20.1	20.1	20.1	ins
Cylinder material	Steel, 2.5 mm (0.10")				
Cylinder lining	Primaglaze: Ceramic Lining, 2 coats				
Insulation	Polyurethane: Pressure Injected Foam, Zero CFC				
Case	Aluminium: Marine Grade, 0.4mm (0.15")				
End Caps	Polypropylene: Carbon Black, UV Stabilised				
Anode	Magnesium with Steel Core				

To re-order this brochure please quote: SM102

Visit our website at
www.solahart.com.au



Solahart World Corporate Headquarters,
112 Pilbara Street, Welshpool, Western Australia 6106.
Telephone: 08 9458 6211. Facsimile: 08 9351 8034.
International telephone: + 618 9458 6211.
International facsimile: + 618 9351 8034.
Email: solahart@solahart.com.au
Internet: www.solahart.com.au

Solahart Industries Pty Ltd
ABN 45 064 945 848



 **Solahart**